



# MONTHLY MEMBERSHIP PROGRESS REPORT

District 9 NE

Results as of: 05/31/2019

GMT: OPEN

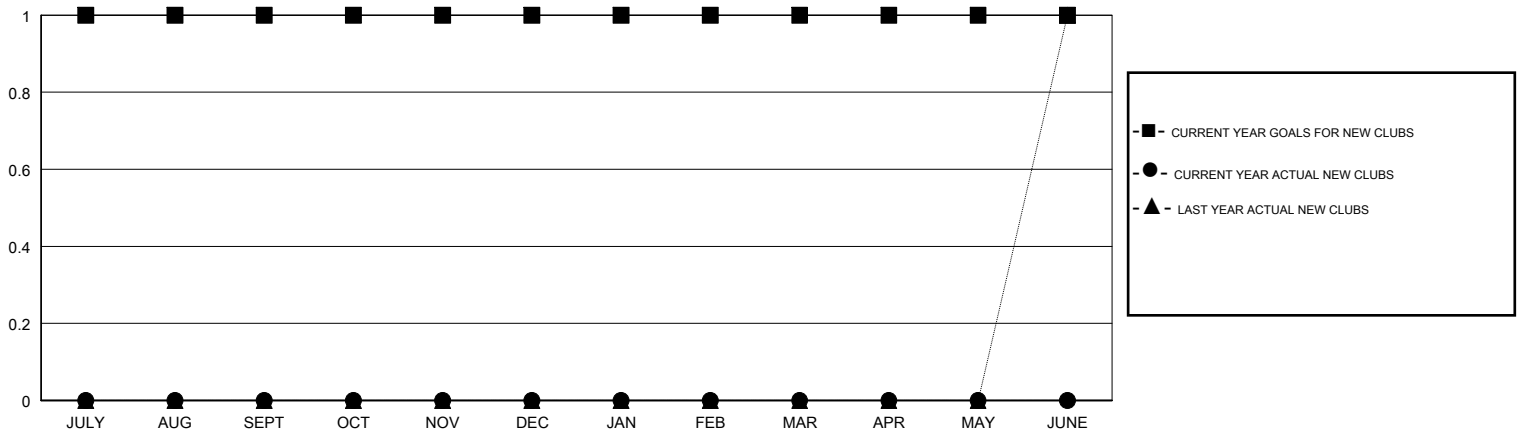
LOCATION IOWA

GMT CA

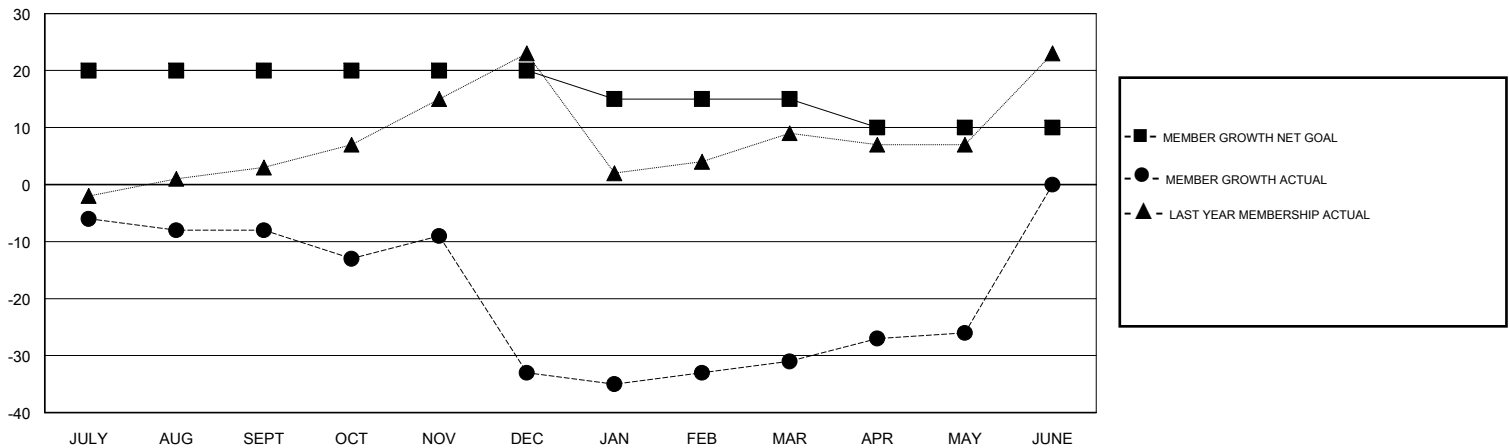
Clubs			
RESULTS FOR 2018-2019			
QUARTER	NEW CLUB GOAL	NEW CLUBS	DROPPED CLUBS
JULY/AUG/SEPT	1	0	0
OCT/NOV/DEC	0	0	1
JAN/FEB/MAR	0	0	0
APR/MAY/JUNE	0	0	0

Members			
RESULTS FOR 2018-2019			
QUARTER	MEMBER GROWTH NET GOAL	MEMBER GROWTH ACTUAL	DROPPED MEMBERS ACTUAL (including transfers)
JULY/AUG/SEPT	20	20	24
OCT/NOV/DEC	0	16	41
JAN/FEB/MAR	-5	25	22
APR/MAY/JUNE	-5	32	26

GOALS AND ACTUAL NEW CLUBS CUMULATIVE



GOALS AND ACTUAL MEMBERS CUMULATIVE



DROPPED CLUBS: 1
------------------

28 CLUBS OF 46 ADDED 1 OR MORE NEW MEMBERS

GENDER DISTRIBUTION	
MALE	1,066 (78.96%)
FEMALE	284 (21.04%)
Women Percentage Fiscal Year Goal: 25%	

DROPPED MEMBERS	
DECEASED	19
CLUB CANCELLED	15
OTHER	79
<b>TOTAL</b>	<b>113</b>

[CLICK HERE FOR CUMULATIVE MEMBERSHIP DATA](#)

TOTAL FAMILY UNIT MEMBERS	150
FAMILY MEMBERS PAYING HALF DUES	76